

Product datasheet

Specifications



connection sub-base accessory - redundant output sub-base

ABE7ACC10

Main

Accessory / Separate Part Designation	Redundant output sub-base
Accessory / Separate Part Destination	PLC
Accessory / Separate Part Category	Connection accessories
Accessory / Separate Part Type	Splitter sub-base
Range Of Product	Modicon ABE7
Sub-Base Type	Redundant output sub-base
Number Of Channels	16
Quantity Per Set	Set of 1

Complementary

Channel Splitting	2 x 16
Net Weight	0.075 kg

Packing Units

Unit Type Of Package 1	PCE
Number Of Units In Package 1	1
Package 1 Height	7 cm
Package 1 Width	3 cm
Package 1 Length	9.5 cm
Package 1 Weight	123 g
Unit Type Of Package 2	S03
Number Of Units In Package 2	24
Package 2 Height	30 cm
Package 2 Width	30 cm
Package 2 Length	40 cm
Package 2 Weight	3.452 kg

Contractual warranty

Warranty	18 months
----------	-----------

Disclaimer: This documentation is not intended as a substitute for and is not to be used for determining suitability or reliability of these products for specific user applications

Sustainability

Green Premium™ label is Schneider Electric's commitment to delivering products with best-in-class environmental performance. Green Premium promises compliance with the latest regulations, transparency on environmental impacts, as well as circular and low-CO₂ products.

Guide to assessing product sustainability is a white paper that clarifies global eco-label standards and how to interpret environmental declarations.

[Learn more about Green Premium >](#)

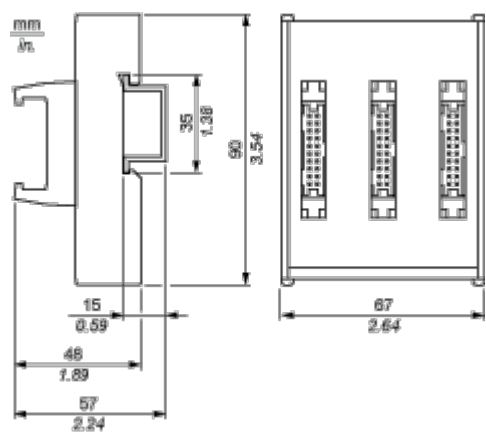
[Guide to assess a product's sustainability >](#)

Well-being performance

✓	Reach Free Of Svhc	
✓	Toxic Heavy Metal Free	
✓	Mercury Free	
✓	Rohs Exemption Information	Yes
Reach Regulation	REACH Declaration	
Eu Rohs Directive	Pro-active compliance (Product out of EU RoHS legal scope) EU RoHS Declaration	
China Rohs Regulation	China RoHS declaration	
Weee	The product must be disposed on European Union markets following specific waste collection and never end up in rubbish bins	

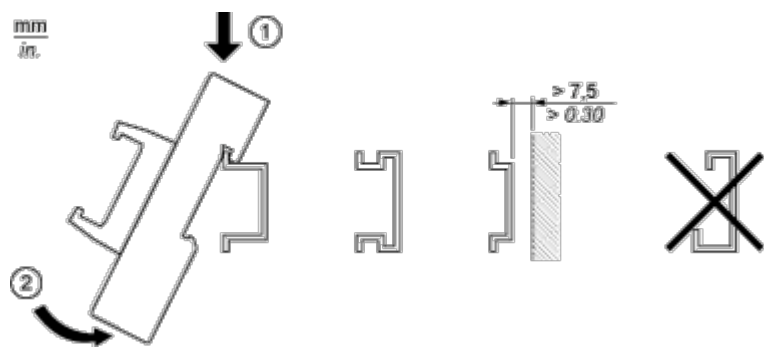
Dimensions Drawings

Dimensions



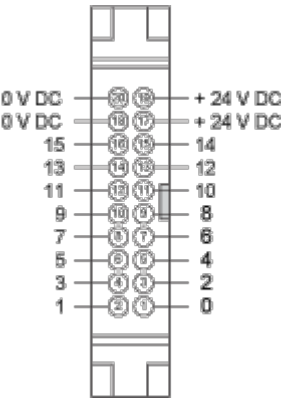
Mounting and Clearance

Mounting



Connections and Schema

HE10 16 Channels



Wiring Diagram

