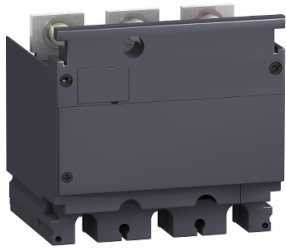


# Product datasheet

Specifications



## CT module and voltage output - 250 A - 3 poles - for NSX100...250

LV431569

### Main

Device Short Name	CT module and voltage output
Product Or Component Type	Current transformer
Device Application	Control
Range Compatibility	ComPact ComPact NSX250
Poles Description	3P
[In] Rated Current	250 A
Current Transformer Ratio	250/5 A
Power Consumption In Va	1.1 VA
Accuracy Class	Class 1

### Complementary

[Ue] Rated Operational Voltage	530 V
Network Type	AC
Network Frequency	50/60 Hz
Auxiliary Connection Terminal	Cable connector 2.5 mm <sup>2</sup>

### Environment

Electrical Shock Protection Class	Class II
Ip Degree Of Protection	IP40 conforming to IEC 60529
Ik Degree Of Protection	IK04 conforming to IEC 62262

### Packing Units

Unit Type Of Package 1	PCE
Number Of Units In Package 1	1
Package 1 Height	13.5 cm
Package 1 Width	14.0 cm
Package 1 Length	17.5 cm
Package 1 Weight	991.0 g
Unit Type Of Package 2	S03
Number Of Units In Package 2	4
Package 2 Height	30.0 cm
Package 2 Width	30.0 cm

Disclaimer: This documentation is not intended as a substitute for and is not to be used for determining suitability or reliability of these products for specific user applications

Package 2 Length	40.0 cm
Package 2 Weight	4.451 kg

## Contractual warranty

Warranty	18 months
----------	-----------

## Sustainability



**Green Premium™ label** is Schneider Electric's commitment to delivering products with best-in-class environmental performance. Green Premium promises compliance with the latest regulations, transparency on environmental impacts, as well as circular and low-CO<sub>2</sub> products.

**Guide to assessing product sustainability** is a white paper that clarifies global eco-label standards and how to interpret environmental declarations.

[Learn more about Green Premium >](#)

[Guide to assess a product's sustainability >](#)

## Well-being performance

 Mercury Free	
 Rohs Exemption Information	<a href="#">Yes</a>
Reach Regulation	<a href="#">REACH Declaration</a>
Eu Rohs Directive	Compliant with Exemptions
China Rohs Regulation	<a href="#">China RoHS declaration</a> Product out of China RoHS scope. Substance declaration for your information