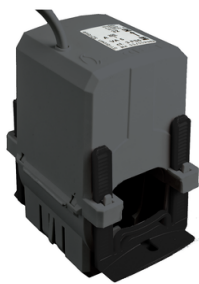


# Product datasheet

Specifications



## PowerLogic Split Core Current Transformer - Type HP, for cable - 0250A / 5A

METSECT5HP025

### Main

Range	PowerLogic
Product Name	CT
Product Or Component Type	Current transformer
Secondary Current	5 A
Accuracy Class	Class 1 at 1.5 VA
[In] Rated Current	250 A

### Complementary

Current Transformer Type	Standard for cable Split core
Current Transformer Ratio	250/5
[Ith] Conventional Free Air Thermal Current	300 A
Maximum Safety Factor	5
Permissible Current	15000 A during 1 s
[Ue] Rated Operational Voltage	< 720 V 50 Hz
[Ui] Rated Insulation Voltage	3 kV
Mounting Mode	Clip-on
Width	Outside: 72.2 mm
Height	Outside: 120.6 mm
Diameter	44 mm inner:
Electrical Insulation Class	Class E
Cable Outer Diameter	44 mm
Connections - Terminals	Cable 2 cable(s) 0.5...1.5 mm² 0.5 m

### Environment

Standards	DIN EN 60044-1 DIN EN 61869-1 DIN EN 61869-2 VDE 0414
Ambient Air Temperature For Operation	-5...50 °C
Ambient Air Temperature For Storage	-25...70 °C

### Packing Units

Disclaimer: This documentation is not intended as a substitute for and is not to be used for determining suitability or reliability of these products for specific user applications

Unit Type Of Package 1	PCE
Number Of Units In Package 1	1
Package 1 Height	8.5 cm
Package 1 Width	8.5 cm
Package 1 Length	14.0 cm
Package 1 Weight	456.0 g
Unit Type Of Package 2	S02
Number Of Units In Package 2	12
Package 2 Height	15.0 cm
Package 2 Width	30.0 cm
Package 2 Length	40.0 cm
Package 2 Weight	5.722 kg

## Sustainability





**Green Premium™ label** is Schneider Electric's commitment to delivering products with best-in-class environmental performance. Green Premium promises compliance with the latest regulations, transparency on environmental impacts, as well as circular and low-CO<sub>2</sub> products.

**Guide to assessing product sustainability** is a white paper that clarifies global eco-label standards and how to interpret environmental declarations.

[Learn more about Green Premium >](#)

[Guide to assess a product's sustainability >](#)

## Well-being performance

	Reach Free Of Svhc	
	Toxic Heavy Metal Free	
	Mercury Free	
	Rohs Exemption Information	Yes
Reach Regulation	<a href="#">REACH Declaration</a>	
Eu Rohs Directive	Compliant <a href="#">EU RoHS Declaration</a>	
China Rohs Regulation	<a href="#">China RoHS declaration</a>	
Weee	The product must be disposed on European Union markets following specific waste collection and never end up in rubbish bins	