

Powering India's sustainability
and growth for global

IMPACT

India Investor Event
December 2024



Life Is On

Schneider
Electric

Disclaimer

All forward-looking statements are Schneider Electric management's present expectations of future events and are subject to a number of factors and uncertainties that could cause actual results to differ materially from those described in the forward-looking statements. For a detailed description of these factors and uncertainties, please refer to the section "Risk Factors" in our Universal Registration Document (which is available on www.se.com). Schneider Electric undertakes no obligation to publicly update or revise any of these forward-looking statements.

This presentation includes information pertaining to our markets and our competitive positions therein. Such information is based on market data and our actual revenues in those markets for the relevant periods. We obtained this market information from various third-party sources (industry publications, surveys and forecasts) and our own internal estimates. We have not independently verified these third-party sources and cannot guarantee their accuracy or completeness and our internal surveys and estimates have not been verified by independent experts or other independent sources.

Our Global Supply Chain



Mourad Tamoud
Executive Vice President
Global Supply Chain



Tailored, Agile and Resilient world-class **global supply chain**

Accelerating mega trends are **profoundly reshaping supply chain**

Megatrends

Customer & Business Effects

Impact for supply chain

①
Digitization &
Artificial Intelligence

⑤
New Global
Equilibrium

②
Climate Change

④
Evolution of Wealth

③
Energy Transition

Digital and electronics everywhere

Sustainability, climate crisis
and resource frugality

Customer personalization

Call for agility and resilience

Decoupling multi-polar world

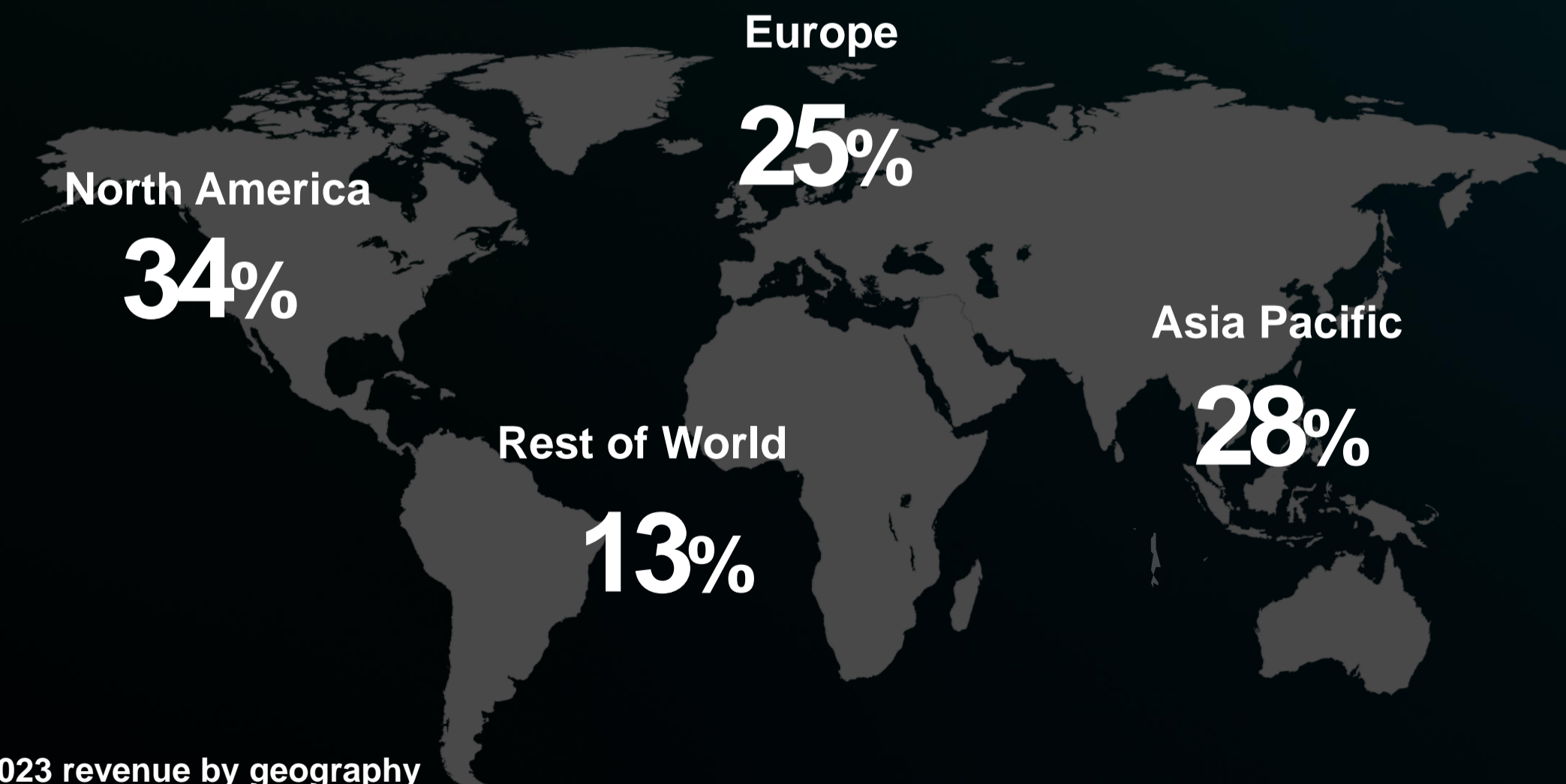
- Digital: 4th industrial revolution acceleration
Electronics and software step up
- Act sustainable, also a unique value proposition for Schneider Electric's growth
- Customers value anti-fragile and personalized supply chain
- Agile, resilient and shorter supply chain: the new paradigm to be competitive in a fast-changing world
- People central to success – hire, engage, retain, develop.

Change in the global landscape - we are well positioned in the shift in paradigm

Supply Chains

Rebuilt resilient and autonomous, importance of electronics

Moving towards ~90% sourcing and manufacturing within regional hubs



● % of 2023 revenue by geography

Reshoring

Critical industries

Trade Barriers and tariffs

Obstructs free trade, favoring domestic production

Global designs & standards

defined within Schneider Performance System & deployed in each region

Power of 2 & orchestration

at least two redundant manufacturing sites and supply base in two regions
redundant logistics network powered by control towers

Robust supply base

Strategic partners, Regional sourcing, Tier X risk containment & Multisourcing

Regional agile & empowered teams

aligned with multi-hub organization

Simplified network

Direct & Shorter flows, Unified operating system, portfolio & supplier reduction

Digitally connected to delight our customers

A vast global network of networks covering the end-to-end value chain



80,000+¹ employees in Supply Chain

¹ including temporary employees

² Production Parts Procurement

Our unique supply-chain sustainability journey



#1

Sector Leader



#1

Among peer group



Most Sustainable Companies

13th year in a row in DJSI and Global 100

Platinum

3 consecutive years



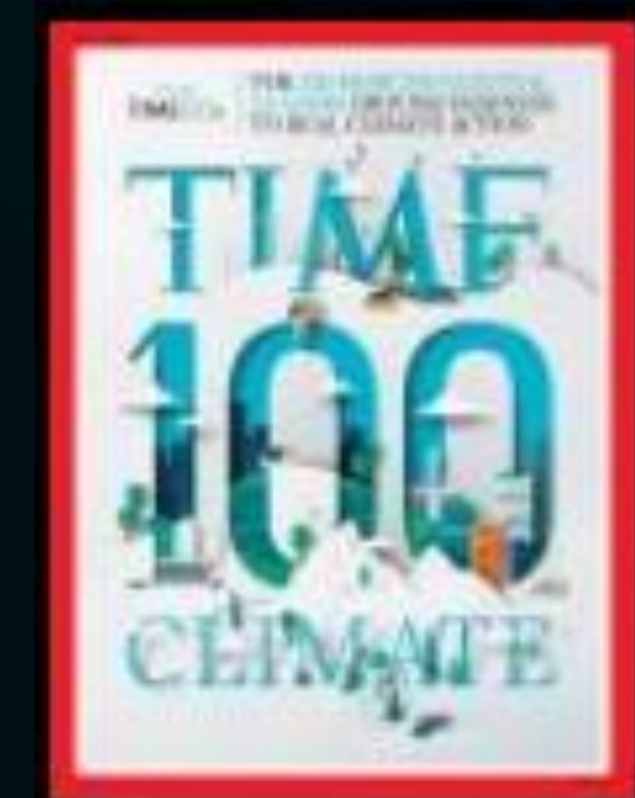
Our leadership in supply chain is externally recognized

Gartner®

2024 & 2023
#1 Top 25 Supply Chain

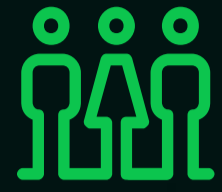
WORLD ECONOMIC FORUM

Circularity Lighthouse
3x Sustainability Lighthouses
5x Advanced Lighthouses
2x End-to-End Lighthouse



BÖRSEN BCG

In the main ESG indices
by MOODY's ANALYTICS



People

growth mindset
core expertise
digital early adopters



Customers

industry-leading quality
specialized by customer segment
reliable supply chain

Our Supply Chain makes

IMPACT



Planet

responsibility: ethical and safe
decarbonization: net-zero ready
resource efficiency



Performance

regional & effective operations
smart & unified processes
collaborative design

Our **Smart Factory** Program



Deploying our **Schneider solutions & technologies** in our factories and distribution centers

Enhanced efficiency for new and existing plants

Applied on differing levels of automation, deployed without manufacturing disruption with compelling ROI

Using EcoStruxure for Industry

Optimize end-to-end efficiency, achieve asset reliability, and deliver customer value

Leveraging innovative technologies

IT solutions, AI and data analytics

Smart Factory program deployment

2017

Launch the program

11 showcases

smart factories and
distribution centers

2019

Think big. Act small.
Scale fast.

60 smart factories

2020

Catalyze optimization
with high level of
platforming data

80+

smart factories and
distribution centers

2024

Velocity of scale. Rigor
through network

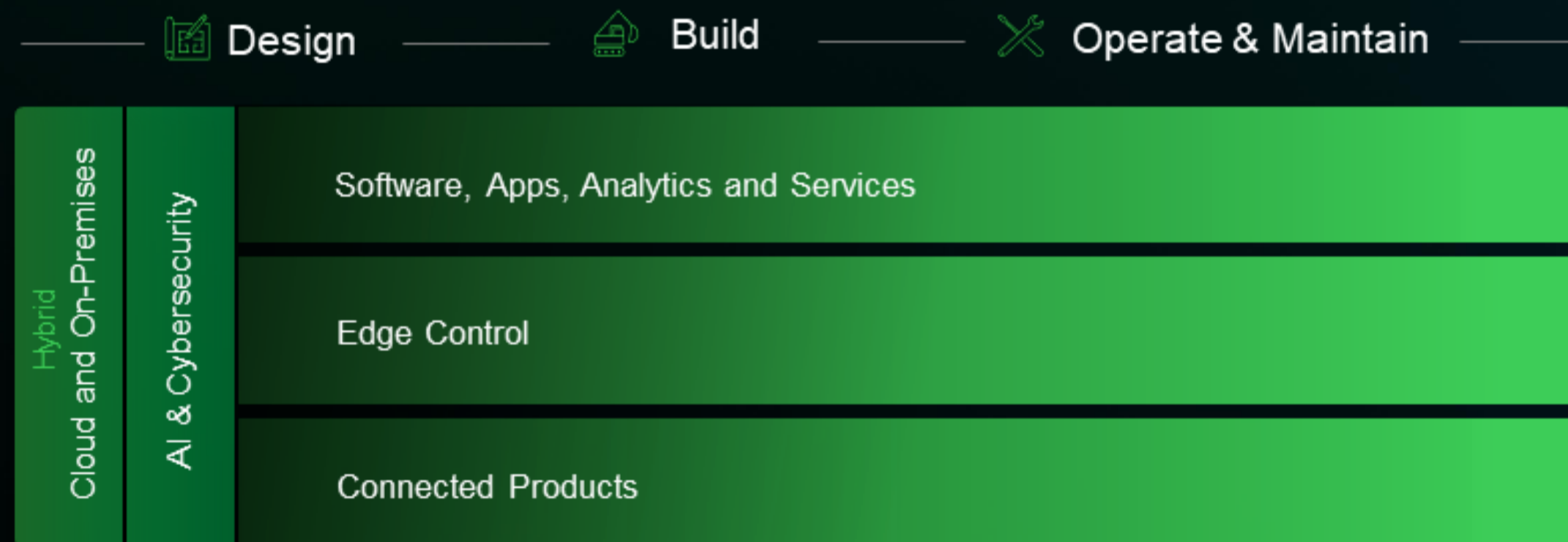
100+

smart factories and
distribution centers

Our technology at the core of the Smart Factory program



IoT & Data | Software for complete Digital Twin



OPTIMIZE

Information Management

AVEVA PI as a One Data Infrastructure

Standard Asset and Process Data models **designed to scale** enabling machine learning at edge and on cloud

Advanced Analytics at Edge driving up to **15% Quality Process Yield**

Predictive Analytics for critical assets deployed at scale

OPERATE

Manufacturing Execution

Adoption and Value creation at the core of Smart Sites deployment

Energy Efficiency 10-12% in 3 years, reducing CO₂ footprint

Quality NQC costs 8-10% reduction year on year

Overall Productivity impact 5-10% year on year

Several successful deployments across the world driving value



Wuxi, China 



Monterrey, Mexico 



Le Vaudreuil, France 



MasterTech, France



Lexington, USA 



Hyderabad, India 



Shanghai, China 



Dunavecse, Hungary

Our unique footprint in India



31
factories

31
distribution centers

2,000+
suppliers

export to
30+
countries

19,000+¹
people



¹ including temporary employees

3rd largest market
for Schneider Electric

60 years of presence
in the country

19 factories

5 factories

7 factories

Schneider
Electric

Lauritz
Knudsen
Electrical & Automation

LUMINOUS

India as one of the four
global hubs

5 advanced smart factories
among the existing 31 factories

India for India and
India for the world

India for India and
India for the world

Expanding capacity by 2.5x to 3x

to serve India and the globe

With agility

technologies for multiple applications and multiple geographical markets

Driving synergies & leveraging the power of Lauritz Knudsen supply chain

to support domestic growth in India



Hyderabad, a Lighthouse for India and the rest of the Group



Sustainability Lighthouse in 2023

Hyderabad factory

Established in 2006

37,800 m² and 1,800+ people

Supporting growth in India and rest of world



Air Circuit Breaker



Vacuum Circuit Breaker



Molded Case Circuit Breakers
MCCB



Contactors



Signaling and switches

Hyderabad factory transformation journey

2017-18

2019-20

2021-22

2023-24

Digital Performance & Energy Management	MES Integration & Digital Tool Adoption	AI / ML Approach	Predictive Analytics
---	---	------------------	----------------------

- Power Monitoring Expert
- Digital Idea and Sim Software
- Lean Digitization System - E-Andon
- Resource Advisor
- EcoStruxure Building Organization

- Machine Advisor
- Power Advisor
- Smart Glass
- SAP PM
- LDS E-Performance
- Lean Digitization System E-Kanban

- Process Management System
- FIORI
- COBOT/ROBOT
- AVEVA Insight & PI
- Robotic Process Automation
- Augmented Operator Advisor

- Gen-AI
- 5G Technology
- Guided Analytics
- AMR
- LDS4.0

Leading to greater **efficiency and sustainability**

52%
Energy savings

61%
CO₂ reduction

64%
Waste optimization

91%
Reduction in Manufacturing
Defect Rate (MDR)

57%
Reduced Water
consumption



se.com

© 2024 Schneider Electric. All Rights Reserved.
Schneider Electric and Life Is On Schneider Electric are trademarks
and the property of Schneider Electric, its subsidiaries, and affiliated companies.
All other trademarks are the property of their respective owners

