

# Product data sheet

Specifications



Complete cam switch, Harmony K, Voltmeter switch, 30 x 30mm, 3L and 3L-N, with off position, 45 degree angle, 10A, for 16 or 22mm

K10F027MCH

## Main

Range Of Product	Harmony K
Product Or Component Type	Complete cam switch
Component Name	K10
[Ith] Conventional Free Air Thermal Current	10 A
Product Mounting	Front mounting
Fixing Mode	Ø 16 or 22 mm hole
Cam Switch Head Type	With front plate 30 x 30 mm
Type Of Operator	Black handle
Rotary Handle Padlocking	Without
Presentation Of Legend	With metallic legend, 0 - L1N - L2N - L3N - L1L2 - L2L3 - L3L1 black marking
Cam Switch Function	Voltmeter switch
Return	Without
Type Of Measurement	Between 3 phases and between 1 phase and neutral
Off Position	With Off position
Switching Positions	Left: 0° - 315° - 270° - 225° Right: 0° - 45° - 90° - 135°
Ip Degree Of Protection	Contact block: IP20 Operating head: IP65 conforming to IEC 60529

## Complementary

Switching Angle	45 °
[Ui] Rated Insulation Voltage	440 V (pollution degree 3) conforming to IEC 60947-1
Rated Operational Power In W	1800 W AC-23A, 220/240 V 3 phases 370 W AC-23A, 110/120 V 1 phase 750 W AC-23A, 220/240 V 1 phase
Rated Power In Hp	1 hp at 220/240 V AC, 3 phases 0.33 hp at 110/120 V AC, 1 phase 0.75 hp at 110/120 V AC, 3 phases 0.75 hp at 220/240 V AC, 1 phase
[Ie] Rated Operational Current Ac	10 A at 400 V AC-1 10 A at 400 V AC-21A 3 A at 240 V AC-15 6 A at 120 V AC-15
[Ie] Rated Operational Current Dc	10 A at 24 V resistive load 0.3 A at 220 V resistive load 0.7 A at 110 V resistive load
Electrical Durability	100000000 cycles

Disclaimer: This documentation is not intended as a substitute for and is not to be used for determining suitability or reliability of these products for specific user applications

Short-Circuit Protection	10 A cartridge fuse, type gG
[Uimp] Rated Impulse Withstand Voltage	4 kV conforming to IEC 60947-1
Contact Operation	Slow-break
Electrical Connection	Captive screw clamp terminals, clamping capacity: 2 x 1.5 mm²
Mechanical Durability	1000000 cycles
Cad Overall Width	30 mm
Cad Overall Height	30 mm
Cad Overall Depth	100 mm
Net Weight	0.055 kg

## Environment

Standards	CENELEC EN 50013 EN/IEC 60947-3 EN/IEC 60947-5-1
Product Certifications	CULus
Protective Treatment	TC
Ambient Air Temperature For Operation	-20...55 °C
Ambient Air Temperature For Storage	-40...70 °C
Electrical Shock Protection Class	Class II conforming to IEC 60536

## Packing Units

Unit Type Of Package 1	PCE
Number Of Units In Package 1	1
Package 1 Height	4.0 cm
Package 1 Width	4.1 cm
Package 1 Length	10.5 cm
Package 1 Weight	73.0 g
Unit Type Of Package 2	S02
Number Of Units In Package 2	65
Package 2 Height	15.0 cm
Package 2 Width	30.0 cm
Package 2 Length	40.0 cm
Package 2 Weight	5.2 kg

## Contractual warranty

Warranty	18 months
----------	-----------

## Sustainability





**Green Premium™ label** is Schneider Electric's commitment to delivering products with best-in-class environmental performance. Green Premium promises compliance with the latest regulations, transparency on environmental impacts, as well as circular and low-CO<sub>2</sub> products.

**Guide to assessing product sustainability** is a white paper that clarifies global eco-label standards and how to interpret environmental declarations.

[Learn more about Green Premium >](#)

[Guide to assess a product's sustainability >](#)

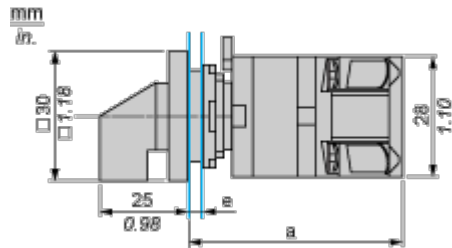
## Well-being performance

 Reach Free Of Svhc	
 Toxic Heavy Metal Free	
 Mercury Free	
 Rohs Exemption Information	Yes
Reach Regulation	<a href="#">REACH Declaration</a>
Eu Rohs Directive	Pro-active compliance (Product out of EU RoHS legal scope) <a href="#">EU RoHS Declaration</a>
China Rohs Regulation	<a href="#">China RoHS declaration</a>
Weee	The product must be disposed on European Union markets following specific waste collection and never end up in rubbish bins
California Proposition 65	WARNING: This product can expose you to chemicals including: Nickel compounds, which is known to the State of California to cause cancer, and Di-isodecyl phthalate (DIDP), which is known to the State of California to cause birth defects or other reproductive harm. For more information go to <a href="http://www.P65Warnings.ca.gov">www.P65Warnings.ca.gov</a>

Dimensions Drawings

Cam Switch

Front Mounting by Ø16 mm/0.63 in. or Ø 22 mm/0.87 in. hole

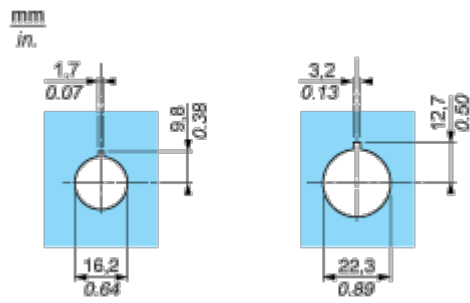


- a 75 mm/2.95 in.
- e support panel thickness: 0.5 mm to 5 mm/0.02 in. to 0.2 in.

Mounting and Clearance

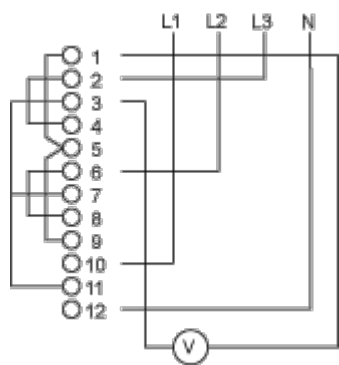
Cam Switch

Ø 16 mm/0.63 in. and Ø 22 mm/0.87 in. Panel Cut-outs



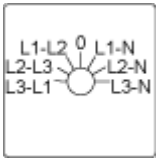
Technical Description

Link Positions (Factory Mounted)



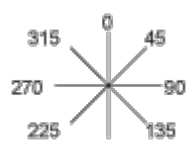
Marking

---



Angular Position of Switch

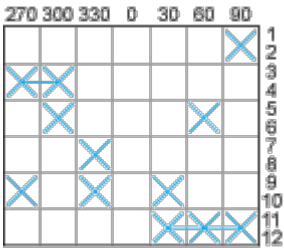
---





Switching Program

---



Convention Used for Switching Program Representation

-  Contact closed
-  Contact closed in 2 positions and maintained between the 2 positions
-  Sealed assembly for auto-maintain control
-  Overlapping contacts
-  Spring return position: for a switching angle of 90°, spring return is over 30° after the last position (for a maximum of 3 simultaneous contacts).

Example:

